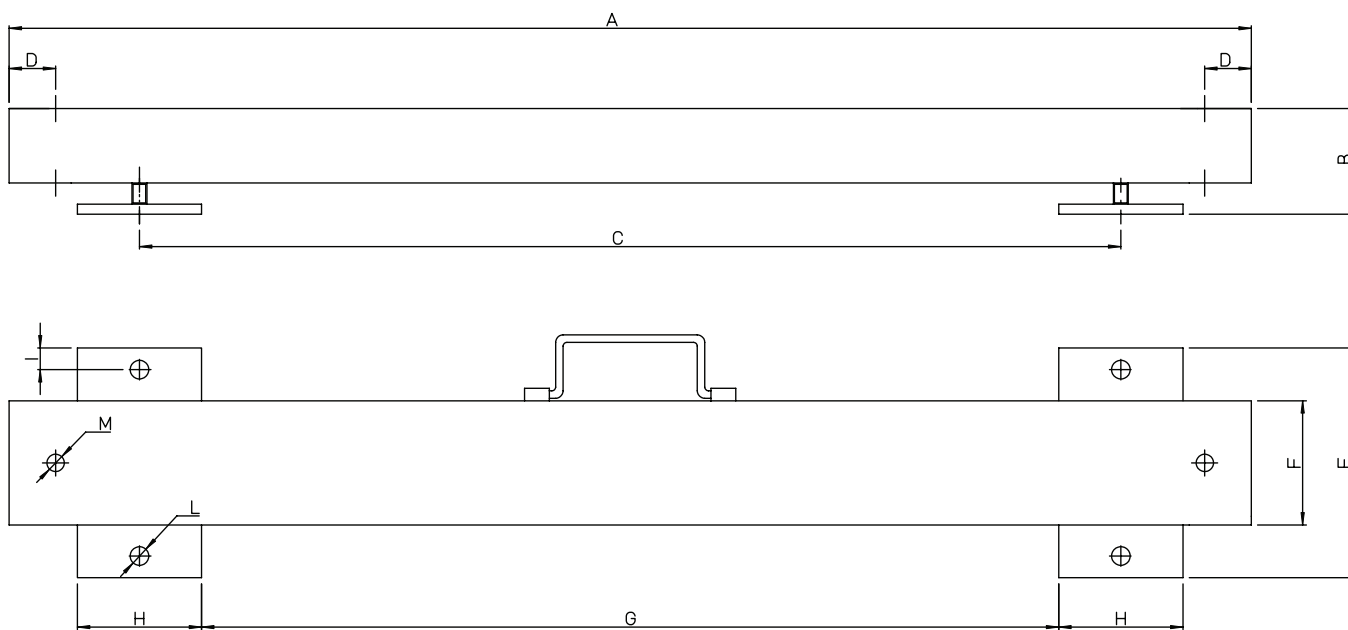


STAINLESS STEEL LOAD BARS

**Stainless steel load bars, with
length from 800mm to 1250mm and
capacity 2000kg.
For industry and agriculture**



CODE	Capacity (kg)	A (mm)	B (mm)	C (mm)	D (mm)	E (mm)	F (mm)	G (mm)	H (mm)	I (mm)	L (mm)	M (mm)
PLAT-BAR-INOX-002-800	2000 kg	800	85	590	37.5	185	100	490	100	17.5	N°4 x Ø15	N°2 x Ø14
PLAT-BAR-INOX-002-1000	2000 kg	1000	85	790	37.5	185	100	690	100	17.5	N°4 x Ø15	N°2 x Ø14
PLAT-BAR-INOX-002-1250	2000 kg	1250	85	1040	37.5	185	100	940	100	17.5	N°4 x Ø15	N°2 x Ø14



FEATURES

Structure

AISI 304 stainless steel

Loading plates

AISI 304 stainless steel

Load cells

4 stainless steel sensors

Feet

Stainless steel

Cable

2 x 2.5 m

Indicator

Optional (WBOX, Tiny, Smart, More, FIVE Series)

Other

Easy to carry

DIMENSIONS AND FEATURES MAY CHANGE WITHOUT NOTICE